

# FLine® patch cords

## GigaLine® DX 100, 500, 625

Ready-made fibre optical duplex cables for patch field and workplace cabling

Type: KL-J-V(ZN)H

**Sheath material:** halogen-free, flame-retardant compound

**Sheath colour:** yellow (single-mode), orange (multimode)



**Single-mode standard: insertion losses: < 0.4 dB; return losses: > 40 dB**

SC-Duplex/SC-Duplex	SC-Duplex/ST	ST/ST	FC-PC
9FP40XXX	9FP41XXX	9FP42XXX	9FP45XXX
FC-PC HRL/FC-PC HRL	E2,000/E2,000	E2,000 HRL/E2,000 HRL	LC-DX/LC-DX (mini-zip)
9FP46XXX	9FP43XXX	9FP44XXX	9FP1AXXX (orange)
FC-DX/LC-DX (Duplex)	LC-DX/SC-Duplex (mini-zip)	LC-DX/SC-Duplex (Duplex)	LC-DX/LC-DX (mini-zip)
9FP3XXXX (yellow)	9FP1XXXX (yellow)	9FP2FXXX (yellow)	9FP3ZXXX (yellow)

**FLine® 110, Multimode G50/125 OM2: insertion losses: < 0.4 dB; return losses: > 25 dB**

SC-Duplex/SC-Duplex	SC-Duplex/ST	ST/ST	E2,000/E2,000
9FP02XXX	9FP05XXX	9FP08XXX	9FP11XXX
MT-RJ/MT-RJ	SC-Duplex/MT-RJ	LC-DX/LC-DX (mini-zip)	LC-DX/LC-DX (Duplex)
9FP14XXX	9FP17XXX	9FP5AXXX	9FP2CXXX
LC-DX/MT-RJ (mini-zip)	SC-Duplex/LC-DX (mini-zip)	SC-Duplex/LC-DX (Duplex)	ST/LC-DX (Duplex)
9FP1IXXX	9FP47XXX	9FP2DXXX	9FP3JXXX

**FLine®, Multimode G50/125 OM3: insertion losses: < 0.4 dB; return losses: >25 dB**

SC-Duplex/SC-Duplex	SC-Duplex/ST	ST/ST	E2,000/E2,000
9FP52XXX	9FP31XXX	9FP3TXXX	9FP3FXXX
LC-DX/LC-DX (Duplex)	LC-DX/LC-DX (mini-zip)	SC-Duplex/LC-DX (Duplex)	ST/LC-DX (Duplex)
9FP2GXXX	9FP3LXXX	9FP2YXXX	9FP4AXXX

**FLine® 300, Multimode G50/125 OM3: insertion losses: < 0.2 dB; return losses: >35 dB**

SC-Duplex/SC-Duplex	LC-DX/LC-DX
9FP3CXXX	9FP3YXXX

**FLine® 550, Multimode G50/125 OM3 "e": insertion losses: < 0.2 dB; return losses: >35 dB**

SC-Duplex/SC-Duplex	LC-DX/LC-DX
9FP4CXXX	9FP4YXXX

**Multimode G62,5/125 OM1, standard: insertion losses: < 0.4 dB; return losses: >25 dB**

SC-Duplex/SC-Duplex	SC-Duplex/ST	ST/ST	E2,000/E2,000
9FP03XXX	9FP06XXX	9FP09XXX	9FP12XXX
MT-RJ/MT-RJ	SC-Duplex/MT-RJ	LC-DX/LC-DX (mini-zip)	SC-Duplex/LC-DX (mini-zip)
9FP15XXX	9FP18XXX	9FP6AXXX	9FP6XXX

XXX – length in decimetres

Other or mixed designs available on request

Example: KL-J-V(ZN)H 2 E9...10/125 with SC-Duplex/SC-Duplex ready-made, length: 2 meters: 9FP40020

## FLine® office and floor distributors – multifunctional housings for FTTD/FTTO cabling

Network installations are increasingly being implemented with disturbance-proof fibre optic systems technology with future capabilities.

This allows EMC problems as well as different earthing potentials to be avoided for cabling reaching through whole buildings.

When a fibre optic cabling with a star structure is used in a building, the long ranges involved make it possible to dispense with active components on the individual floors.

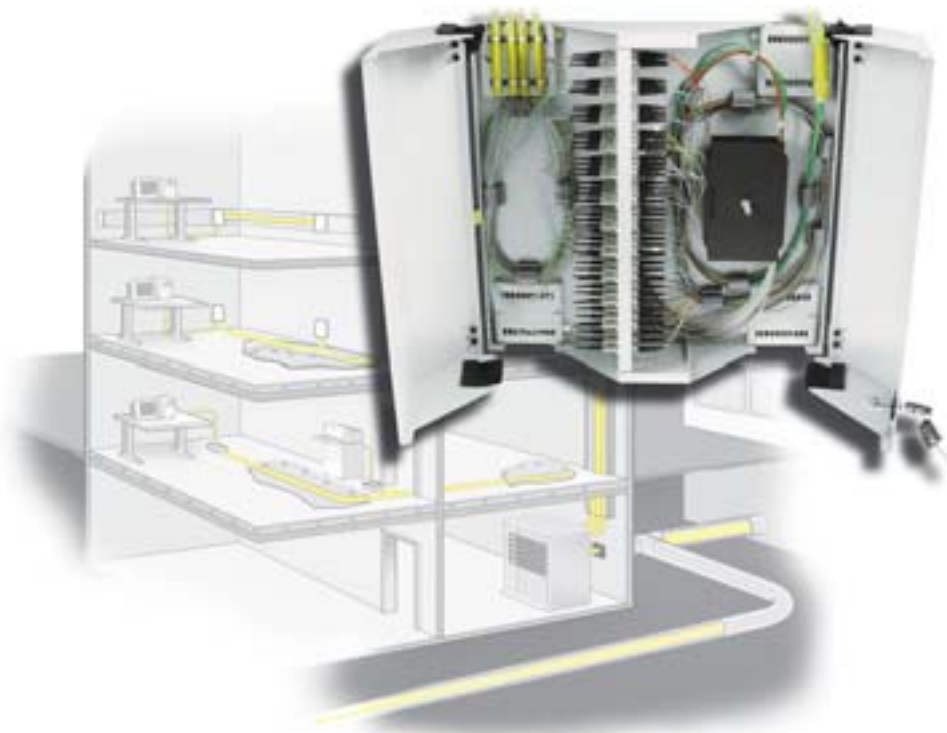
19" distributor cabinets and separate security areas (rooms) are no longer necessary.

The space-saving office and floor cables are perfectly suited for the transitions from high-fibre backbone cables to breakout cables for workplace cabling.

They are easy to install and offer space-saving organisation and optimum protection for FO systems engineering.

### Characteristics which ensure a high degree of flexibility

- The FLine® office and floor distributors can be optionally equipped with splice cassettes and/or distributor plates for taking up fibre optical couplings.
- Later modifications to the components used are possible at any time
- Takes up a maximum of up to 192 fibres
- The pigtails are coloured (primary and secondary coating) according to the DIN IEC 60304 colour code for safe and reliable installation
- The pigtails in the splice cassette are ready for splicing
- The arriving and departing fibre optic cables are fixed to a strain relief strip in the housing
- The cable entries are sealed via brush strips or PG glands
- Housing with two pivoted doors, lockable
- Housing colour: light grey, RAL 7035



## FLine® office and floor distributors – multifunctional housings for FTTD/FTTO cabling

### Size A: 300 x 250 x 110 mm

The wall distributor/splice box can be equipped with the following components:

- Up to 8 splice cassettes with a total of 96 fibres
- One integrated coupling panel can be equipped with up to 48 couplings for fibre optic connectors
- Optionally, 2 different cable entry modules can be used ( 1 x at top and 1 x at bottom)
- light grey, RAL 7035

### Size B: 410 x 410 x 110 mm

The wall distributor/splice box can be equipped with the following components:

- Up to 16 splice cassettes with a total of 192 fibres
- One integrated coupling panel can be equipped with up to 96 couplings for fibre optic plug connectors
- Optionally, 4 different cable entry modules can be used ( 2 x at top and 2 x at bottom)
- light grey, RAL 7035

### In general:

- Optionally, 4 different cable entry modules can be used (2 x at top at 2 x at bottom)
  - Brush strip
  - 2 x PG 16
  - 2 x PG 21

### Scope of delivery:

- Fibre optical wall distributor/splice box housing empty, without cable entry modules with standard closing cylinder



Coupling panel



Cable entry modules

### Accessories:

- Coupling panel to take up ST, SC-Duplex, E 2,000, LC-Duplex, MT-RJ
- Splice cassette with holder and cover
- Pigtails
- Crimp/shrink splice protector
- Cable guide bar with velcro® band
- Dummy plates

Office/wall distributor/splice box		Article no.	Office/wall distributor/splice box		Article no.
<b>Size A:</b>	300 x 250 x 110 mm Housing empty	9FW048V	<b>Size B:</b>	410 x 410 x 110 mm Housing empty	9FW096V

### Coupling panel

for a max. of	12 x SC-Duplex	9FW1204	for a max. of	24 x SC-Duplex	9FW2404
for a max. of	24 x ST 24 x FC-PC	9FW1223	for a max. of	48 x ST 48 x FC-PC	9FW2423
for a max. of	24 x E 2,000, 12 x LC-Duplex 24 x MT-RJ	9FW1232	for a max. of	48 x E 2,000 24 x LC-Duplex 48 x MT-RJ	9FW2432

**Couplings**

<b>Multimode</b>		<b>Single-mode</b>	
SC-Duplex	9FZ90004	SC-Duplex	9FZ90004
ST	9FZ90023	ST	9FZ90023
LC-Duplex	9FZM0055	LC-Duplex	9FZ90055
E 2,000	9FZM0032	E 2,000	9FZ90032
MT-RJ	9FZM0037	MT-RJ	9FZ90037
FC-PC	9FZM0040	FC-PC	9FZ90040

**Cable entry modules**

2 x PG 16	9FZZ0069
2 x PG 21	9FZZ0070
Brush strip	9FZZ0071
Dummy plate	9FZZ0072
Cable guide bar with velcro® band	9FZZ0073
Splice cassette	9FZZ0005
Cover for the splice cassette	9FZZ0021
Splice protector	9FZZ0006
Splice protector holder	9FZZ0007

**Splice cassettes with inserted pigtails**

**Article number**

<b>FLine® 110</b> , Multimode G 50/125, insertion losses < 0.4 dB; return losses > 25 dB "OM2e"	
Splice cassette with 12 x SC pigtails	9F350601
Splice cassette with 12 x ST pigtails	9F350620
Splice cassette with 12 x LC pigtails	9F350655
Splice cassette with 12 x E 2,000 pigtails	9F350632
Splice cassette with 12 x FC-PC pigtails	9F350640
<b>FLine® 300</b> , Multimode G 50/125, insertion losses < 0.2 dB; return losses > 35 dB "OM3"	
Splice cassette with 12 x SC pigtails	9F3B0601
Splice cassette with 12 x LC pigtails	9F3B0655
<b>FLine® 550</b> , Multimode G 50 / 125 , insertion losses < 0.2 dB; return losses > 35 dB "OM3e "	
Splice cassette with 12 x SC pigtails	9F3D0601
Splice cassette with 12 x LC pigtails	9F3D0655
<b>Single-mode E 9...10/125</b> , insertion losses < 0.4 dB, return losses > 40 dB	
Splice cassette with 12 x SC pigtails	9F390601
Splice cassette with 12 x ST pigtails	9F390620
Splice cassette with 12 x LC pigtails	9F390655
Splice cassette with 12 x E 2,000 HRL pigtails	9F390636
Splice cassette with 12 x E 2,000 pigtails	9F390632
Splice cassette with 12 x FC-PC pigtails	9F390640
Splice cassette with 12 x FC-PC-HRL pigtails	9F390645